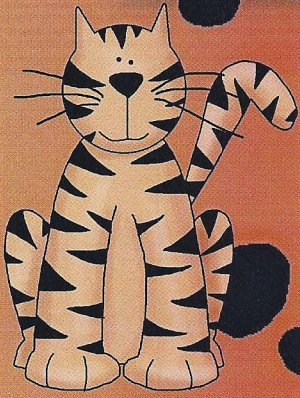
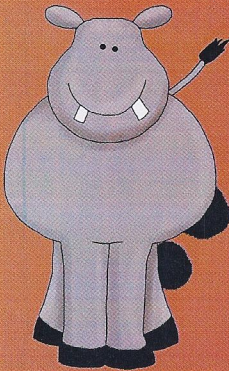
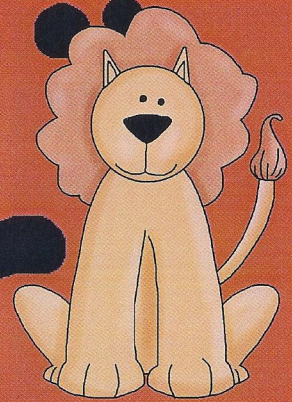


# RULES OF THE JUNGLE



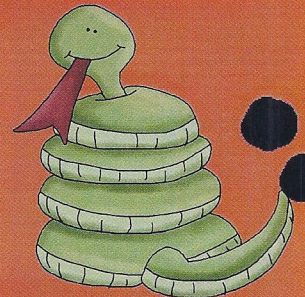
**FOLLOW DIRECTIONS  
THE FIRST TIME.**

**KEEP HANDS, FEET, AND  
OBJECTS TO YOURSELF.**



**WORK QUIETLY AND DO  
NOT DISTURB OTHERS.**

**RAISE YOUR HAND TO SPEAK  
OR LEAVE YOUR SEAT.**



**RESPECT SCHOOL AND  
PERSONAL PROPERTY.**